

## Speakers

### Mayo Clinic

Fletcher Miller, Mayo Clinic, Rochester (MN)

### Regular UK faculty

Stephen Glen, Forth Valley Royal Hospital

Alan Japp, Edinburgh Royal Infirmary

James Newton, John Radcliffe Hospital, Oxford

David Northridge, Edinburgh Royal Infirmary

### Scottish Cardiac Society

Shona Jenkins, Glasgow Royal Infirmary

Vera Lennie, University Hospital, Crosshouse / Ayr

### British Society of Echocardiography

Rick Steeds, Queen Elizabeth Hospital, Birmingham

David Oxborough, Liverpool John Moores University

Martin Stout, University Hospital South Manchester

### Society for Cardiological Science and Technology (Scottish branch)

Joanne Cusack, Forth Valley Royal Hospital

---

Cost: £295 including meeting dinner.

**Registration form and further details online at**

**[www.advancedecho.co.uk](http://www.advancedecho.co.uk)**

Contact us by email: [FV-UHB.advancedecho@nhs.net](mailto:FV-UHB.advancedecho@nhs.net)

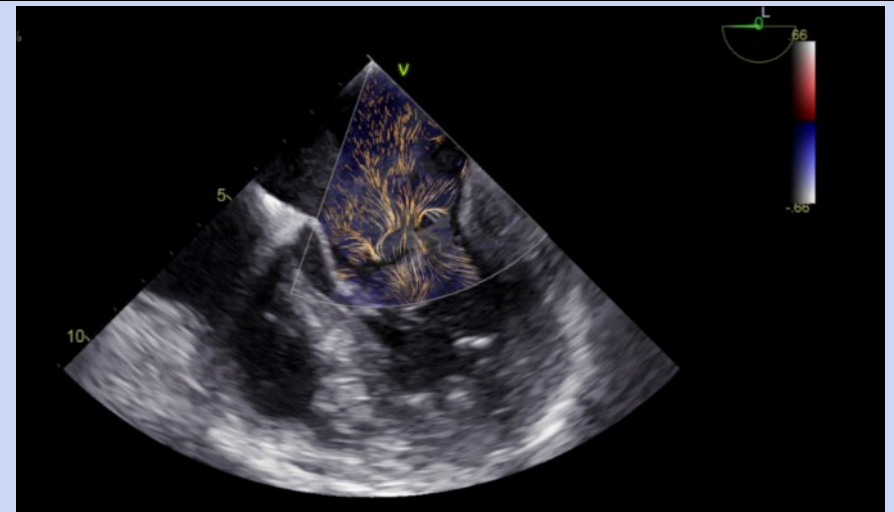
Discounted overnight hotel accommodation available at Norton House—  
contact hotel directly on **0131 333 1275** before 30th April 2020.

Other nearby accommodation options include Travelodge and Premier Inn, both within 5  
minutes of Norton House. The hotel is 2 miles from Edinburgh Airport,  
6 miles from Haymarket station, and adjacent to the M8/9 for road links.



## 15th Advanced Echocardiography with Mayo Clinic faculty

A joint meeting with the British Society of Echocardiography,  
the Scottish Cardiac Society and the Society for Cardiological Science and Technology  
8-9th June 2020, Norton House Hotel, Edinburgh



# Topics

## Clinical decision making with echocardiography

Stress echo for low output aortic stenosis

Cardiac sources of embolism

Transcatheter therapy for mitral regurgitation

Prosthetic valve dysfunction

Perivalvular regurgitation

Unexpected left ventricular hypertrophy

Cardiac tamponade

## Focus on strain

Speckle strain assessment

Clinical applications

## Diagnosis and risk stratification in cardiomyopathy

Hypertrophic

Dilated

Restrictive

Right ventricular

Fabry's disease

## 3D echocardiography

Practical tips for image acquisition and optimisation

Valvular heart disease

Assessment of ventricular function

## Focused updates

Carcinoid valvular disease

Heart failure with preserved ejection fraction

Mitral valve prolapse

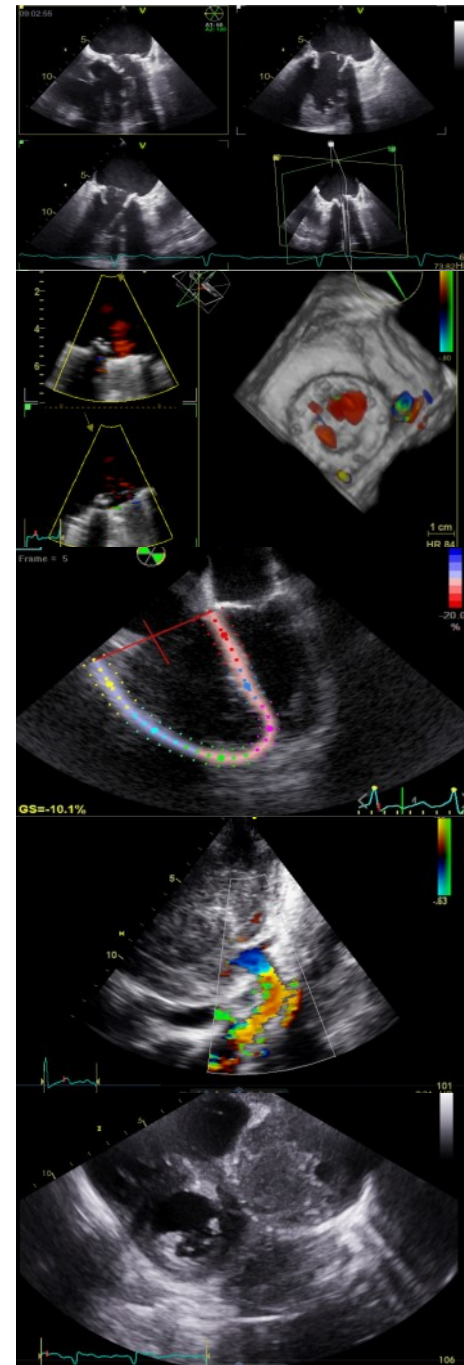
Takotsubo syndrome

## Structural heart disease

Patent foramen ovale

Detection and management of procedural complications

## Cardiac masses



We look forward to welcoming you to the 15th Advanced Echo course which will be held at Norton House Hotel, near Edinburgh, on 8-9th June 2020. This year will be a special edition and we are joining with BSE, SCS and SCST for the first time.

Norton House has excellent travel links by road (M8/M9), rail (Edinburgh Haymarket—6 miles) and air (Edinburgh Airport—2 miles). Further details about the hotel can be found at

[www.handpickedhotels.co.uk/nortonhouse](http://www.handpickedhotels.co.uk/nortonhouse)

This is a popular clinically focused course and we're delighted to maintain our link with Mayo Clinic in Rochester, Minnesota. Prof Fletcher Miller, former director of the echo lab at Mayo Clinic, will be at the course this year. The course is small enough to be friendly and interactive but big enough to attract the very best speakers in echo. The programme changes every year to reflect the latest guidelines and developments.

Overnight delegates should book directly with the hotel to take advantage of a discounted accommodation rate. Other accommodation options are available locally including a Travelodge and a Premier Inn, both of which are around 5 minutes travel by car from Norton House hotel.

We hope to see you in June!